

Model SG6548

Indicating Pressure Switch

The Model SG6548 Indicating Pressure Switch is designed to provide economical pressure monitoring with set-point indication of high purity, toxic and corrosive gases. In addition to providing accurate indication of gas pressure, this 2 inch diameter instrument incorporates a magnetically actuated, hermetically sealed reed switch capable of operating low voltage annunciators, lights or relays.

Moving the index on the front dial to the desired set point sets the switch. A small magnet fastened to the indicating pointer actuates the switch. A magnetic latch on the switch permits the switch to remain "on" or "off" after the pointer passes the operating point, without restraint on the indicating pointer. The switch action is configurable to close on increasing pressure or close on decreasing pressure. The user can change the switch action by removing the front bezel, loosening the pointer screw, and flipping the pointer over. The switch action is noted on the tail of the pointer.

Warning: We strongly recommend the use of our Explosion-Proof Type Pressure Switch Model SG6541 for all flammable and oxygen applications.



Model SG6548

Specifications

Mechanical

- Dial Size: 2" diameter
- Gauge Pressure Range: See Table I
- Adjustable Set-Point: See Table I
- Maximum Temperature: 105°C
- Internal Surface: Type 316L Stn. Stl.
- Case: 300 Series Polished Stainless Steel
- Ring and Window: Polycarbonate window permanently retained in stainless steel ring fastened to case with 2 screws
- Movement: 300 Series Stainless Steel
- Dial: Electrically insulated laminate, white background, black markings; 270° arc of graduations
- Bourdon Tube: Type 316L Seamless Stainless Steel, TIG welded
- Connection: Type 316L Stainless Steel 1/4" NPT; low mount

Electrical

- Connection: 26 AWG, PTFE insulated, 10' leads; (2 black wires)
- Maximum Power: 10 watts DC, 12 VA AC
- Maximum Switching Current: 0.5 amps AC/DC noninductive
- Maximum Switch Voltage: 28 V AC/DC
- Indication Accuracy: $\pm 2\%$ FS between 10% & 70% FS, $\pm 3\%$ FS elsewhere. Pointer will jump slightly about the set-point due to magnetic interaction.
- Switch Point Accuracy: Switch will operate when pressure is within $\pm 2\%$ span of set-point.
- Switching Differential: 4% of full scale (typically)
- Switch Operation: End user configurable; closes on increasing pressure and opens on decreasing pressure, or closes on decreasing pressure and opens on increasing pressure

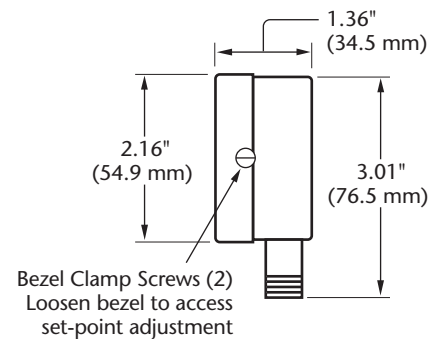
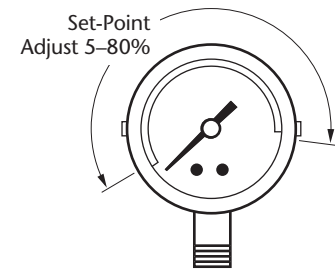


Table I

Part No.	Gauge Pressure Range (psig)	Adjustable Set-Point (psig)	
		Minimum	Maximum
SG6548-200	0-200	10	160
SG6548-600	0-600	30	480
SG6548-3000	0-3000	150	2400