

TRB Series

Modular, Double Row, High Purity Manifolds

Double Row Manifolds are used to connect four or more cylinders together for greater on-line storage capacity or higher flow rates. These double-row brass manifolds are designed for pedestal mounting and are provided with diaphragm seal station valves, 3-ft pigtails (stainless steel CGA connections with flexible pigtail option) and mounting brackets. They are ideal for installations where wall space is at a premium.

The TRB Series manifolds are manufactured to meet the requirements of the ASME B31.3 Process Piping Code. They are constructed of $\frac{7}{8}$ inch OD 0.200 wall CDA-330 brass seamless tubing, npt threaded and silver braze assembled. ASGE's enhanced manifold header design exceeds industry standards by providing a 4 to 1 - burst to maximum operating pressure safety factor.

Warning: Manifolds are designed to distribute a single gas from two or more cylinders. Never mix gases in a manifold. Injury to personnel or damage to equipment may result.

Standard Features

- Modular Construction allows field installation of additional stations without welding or soldering.
- Diffusion Resistant, Diaphragm Seal Station Valves ensure that gas purity is maintained and allow cylinder removal from a manifold without interrupting gas flow.

Optional Features

- Master Shut-off Valve allows manifold to be isolated from downstream system.
- Double-Braided (All Metal) 3' Stainless Steel Flexible Hose Pigtails with Stainless Steel CGA connections extend service life and provide ease of connecting cylinders.
- Check Valves prevent discharge of gas from manifold and pigtails when changing cylinders (required for flammable gases).
- Pressure Switches monitor line pressure and can activate an external alarm (see pages 103–104) when a certain predetermined pressure is reached (see page 100).

Specifications

Manifolds:

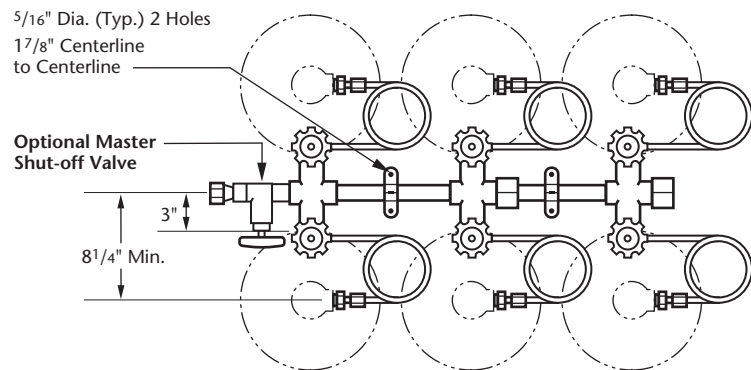
Maximum Inlet Pressure: 3000 psig
Flow Coefficient (each station valve):
 $C_v = 0.25$

Inlet Connections:

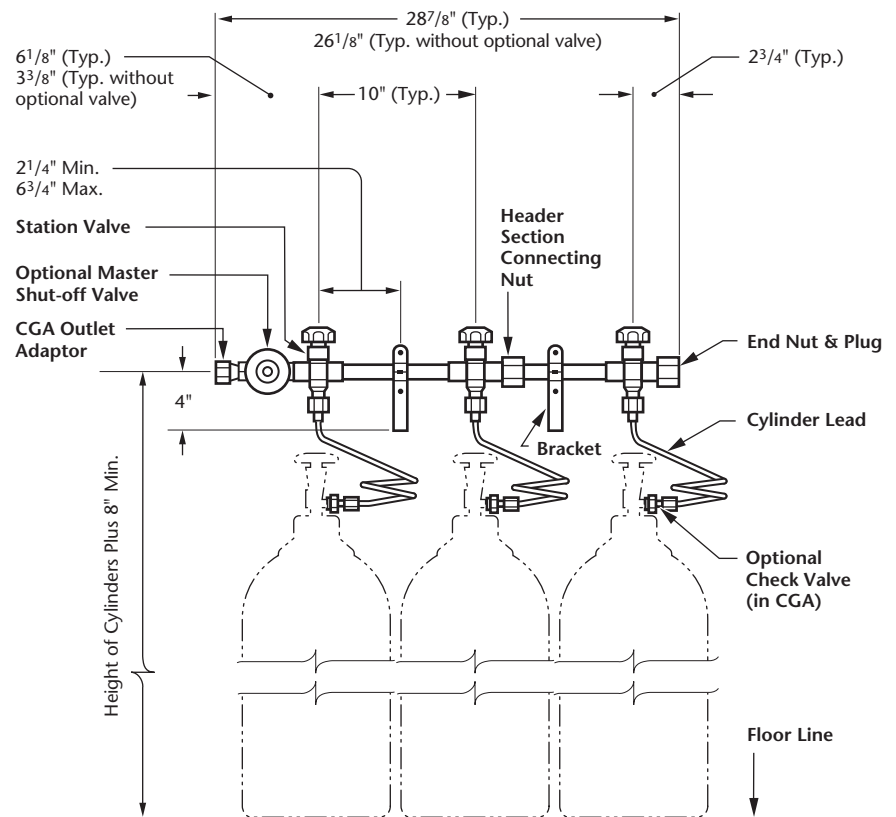
CGA connection as specified
Outlet Connections: CGA connection as specified, suitable for direct mounting of a pressure regulator

Optional Pressure Switch: (page 100)

Optional Master Shut-off Valve:
Model SG5475 (page 137)

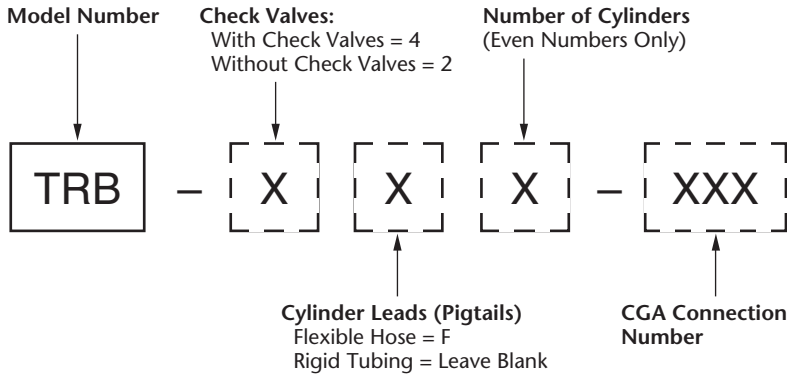


TOP VIEW



FRONT VIEW

Part Number Key for TRB Series Manifolds



Materials of Construction

Manifolds:

Metal Parts: Brass

Seals: Teflon®

Seats:

Check Valves:

Brass Rigid Pigtails: EPDM

SS Flexible Pigtails: Viton®

Station Valves: PCTFE

Optional Pressure Switch: (page 100)

Optional Master Shut-off Valve:

Model SG5475 (page 137)

Ordering Information

To order a double row manifold, complete the part number using the “Part Number Key” above. For example, to order an 8 cylinder, double row manifold with rigid pigtails, check valves, and with CGA 540 connections, the part number would be TRB-4-8-540. Order by complete part number.

Manifolds for Acetylene Service require flashback arrestors (SG6545). All manifolds ordered with CGA 510 will be shipped with flashback arrestors installed on each pigtail, unless the order specifies with which gas it will be used.

Double Row (nonmodular) manifolds are available in stainless steel construction. Contact your Advanced distributor for additional information.

Optional Equipment and Replacement Parts

Equipment and Replacement Parts	Part No.
Master Shut-off Valve – Installed	
Brass	Not Available
Stainless Steel	SG5475i
Pressure Switches	See page 100
Annunciators	See page 103
Flashback Arrestor	
(Required for Acetylene Service—one per cylinder)	SG6545
Teflon® O-Ring Kits (package of 25 ea.)	
For connection between pigtail and station valve	SG6081
For header connection	SG6082B
Replacement Pigtails, Rigid Type	
Brass without Check Valves	SG6640-(CGA)
Brass with Check Valves	SG6641-(CGA)
Replacement Pigtails, Flexible Type	
Without Check Valves	SG6638-(CGA)
With Check Valves	SG6639-(CGA)
Replacement Station Valve	0202-5083A
Repair Kit for Station Valve	0202-3079A
Additional Stations—For adding stations to the following existing manifolds. Each additional station increases manifold capacity by two cylinders.	
Brass with Rigid Pigtails without Check Valves	SG6668-(CGA)
Brass with Rigid Pigtails with Check Valves	SG6669-(CGA)
Brass with Flexible Pigtails without Check Valves	SG6670-(CGA)
Brass with Flexible Pigtails with Check Valves	SG6671-(CGA)

Where “(CGA)” is indicated above, insert proper Compressed Gas Association connection number to complete the part number. Example: SG6640-580. Order by complete part number.